

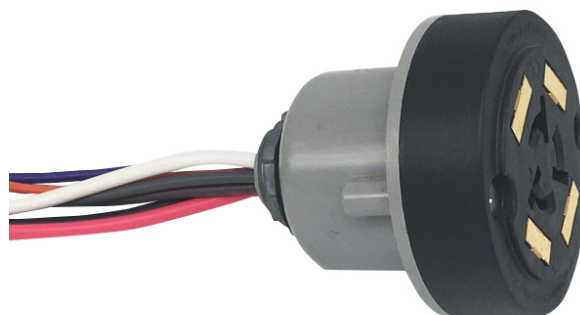
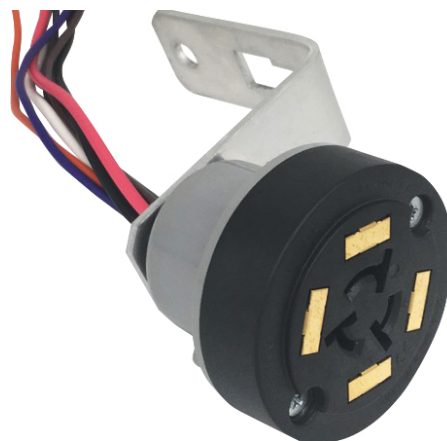
GW-240 Series Twist-Lock Photocontrol Receptacle

Product Summary

All of the GW-240 series photocontrol receptacles are designed to be installed onto luminaires. This series conforms to the newly published ANSI C136.41-2013.

This series offers 2 or 4 gold-plated, low voltage pads on the top surface. This series also offers 360 degree rotation.

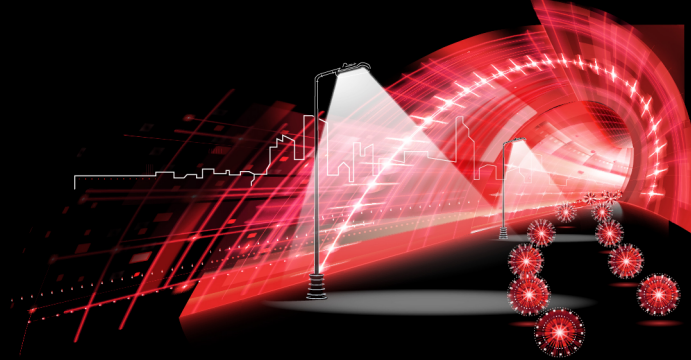
The GW-240X, GW-240Y, and GW-240Z14 have been recognized by UL to applicable US and Canadian safety standards, under their file E188110, Vol. 1 & Vol. 2.



Technical Data

Model No.		GW-240X	GW-240Y	GW-240Z14
Applicable Volt Range		0~480VAC		
Rated Frequency		50/60Hz		
Power Loading		AWG#14: 15Amp max. / AWG#16: 10Amp max.		
Optional Signal Loading		AWG#18: 30VDC, 0.25Amp max.		
Ambient Temperature		-40°C ~ +70°C		
Overall Dimensions (mm)		65Dia.x 40		65Dia.x 67
Accessories	Rear Cover	● R option	●	● R option
	Spring Holder	-	●	-
	Wall Mount Back Cover	-	-	●
	Lock Nut	-	-	●
	Wall Mount Bracket	-	-	● 30x(70+130)
Leads		6" Min. (See Ordering Information)		

5/13/2018



Installation

Disconnect power; wire the receptacle according to the diagram. An arrow indicating NORTH on the top of the receptacle is used to assist correct direction. Install the photocontrol facing NORTH. Adjust the receptacle position if necessary. GW-240 series supports tool-free rotation. Drilling template supplied upon request.

